



**LYNN S. MCEWEN**  
CITY ADMINISTRATOR

**KIM M. VARGO**  
CLERK & TREASURER

**COUNCIL MEMBERS**  
JAMES T. MOODY, JR.  
PEGGY KINLAW  
RYAN BRAGG

**MAYOR**  
MARCUS RIVERA

**COUNCIL MEMBERS**  
ALICIA DAVIS  
RON STILL  
VACANT

January 10, 2023

The Honorable Rep. Lonnie Hosey  
SC House District 91  
Columbia, SC 29201

Dear Representative Hosey:

The City of Barnwell is requesting assistance with additional funding needed to complete the fire station portion of the 2017 Capital Improvement Sales Tax (CIST) Public Safety Facilities Project. The CIST funded only Phase 1 of the project which allowed for the construction of a new Police Station and Phase 2, the Fire Station, remains to be built.

In the interim the city has searched for funding that would allow Phase 2 to begin and was able to allocate a portion of its ARPA funds along with a contribution from your office made in 2019 to the hiring of a Project Management Team that; has developed a budget, is in the process of developing building plans, and will lead the construction phase of the project. Based on their estimates the project could move forward with the funds on hand but would not be fully completed until additional funding could occur.

The current funding will allow for the construction of a steel building along with floor and driveway leaving all the internal infrastructure to be completed later once additional funding becomes available. In addition, and unbudgeted is the demolition and disposal of the 70-year-old structure on the same property currently being used by the fire department that needs to occur to complete the parking and vehicle access components of the new building.

An additional 2 million in funding is being sought and would be adequate, allowing the project to be completed without waiting up to several years. Our budget estimate falls just within this request but due to the current economic inflation situation in the nation we have concerns about cost increases from our original budget estimates made in November of 2022 as we are already seeing price increases as of January 2023.

For now, the City of Barnwell is moving forward with the project with a desire to break ground in March of 2023. We are extremely hopeful that you can provide us the financial assistance needed to complete this much needed project for the community.

Sincerely,



Lynn S. McEwen, Administrator



# CITY OF **BARNWELL** SOUTH CAROLINA

## Fire Department

Thomas A. Dicks  
Chief

The Honorable Rep. Lonnie Hosey

SC House District 91

Dear Representative, Hosey,

January 5, 2023

The following is a design summary of the new fire station with attached drawings and floor plans for reference.

### Health -

In designing today's fire station, we are challenged with reducing health risk specifically the Cancer issue in the fire service due to frequent exposure carcinogens as part of the work environments that firefighters both work and live in. Within the workplace (fire station) carcinogens are produced from diesel exhaust fumes as well as products of combustion that are absorbed and off gassing from firefighter protective clothing stored in the fire station.

In alignment with the National Fire Protection Associations (NFPA) guidance we have incorporated environmental control measures into the new fire station that will reduce and eliminate exhaust fumes as they occur as well as separating occupied areas of the building into clean (administrative and dormitory spaces) vs hot/warm zones (where contaminants may be present). The hot zone areas are inclusive of a decontamination area for the laundry and storage of protective clothing as well as a cleaning station to decontaminate self-contained breathing apparatus (Air Mask/Respirators). The climate control /HVAC systems are designed in such a way to not allow the crossflow of air between hot/warm zones and clean spaces. The building's operational design allows movement throughout clean spaces without crossing into a hot/warm zone. Policies that support this design will regulate what will be allowed in clean spaces and assure protective clothing and such potential contaminated items do not enter a clean spaces.

### Safety & Security -

The administrative side of the building has public, restrictive and private areas. Our public area is at the front and is highly visible for the citizen to locate from the street when obtaining needed services. From there access to the restricted areas which include office, fitness, training, and kitchen spaces of the building are by escort or permission from the department to enter. The private spaces are restricted to the dormitory spaces within the building and are only accessed by department personnel.

#### Fire Safety Education -

The Public Fire & Life Safety Education area of the building is a room that displays educational fire safety messaging as well as a historical artifact display. It contains group seating for children safety programs and will be a destination for out-of-town visitors as well as local citizens.

#### Residential -

The dormitory space will allow for the current staffing model and accept additional staffing should the opportunity arise to fund additional staff. It also contains space for volunteer members to reside at the station when times require it. With this additional dormitory space opportunities to house students enrolled in higher education institutions in the region would be possible offering free boarding in exchange for volunteering with the department.

#### Training & Emergency Management -

The training space in this building is multi-faceted. Beginning with skill development within the apparatus bay. Designed into the structure will be props to allow laddering skills, rescue work and multi-story drills that not only prepare our firefighters but provide credit toward the ISO rating. The classroom area not only serves as a large meeting or formal classroom setting but has the unique option of dividing the room to conduct multiple classes at the same time. The ability to divide the large room also allows for the establishment of an emergency operations center in times of need such as hurricane or winter storm operations and will act as the alternate (backup) emergency operations center for Barnwell County. Our coastal neighbors from Beaufort County as part of their emergency operation plan evacuate their emergency personnel to Barnwell County in certain hurricane conditions. We have designed into this emergency operations area the opportunity for Beaufort County officials to set up a remote operations center to manage their operations and communications while they are relocated to Barnwell County.

#### Apparatus –

As a headquarters station our building is designed to accommodate future growth regarding additional equipment. Housing for 3 engines companies, 1 ladder company, 1 rescue company, a reserve engine company, support equipment such as a foam trailer, haz-mat trailer, rescue boat, urban terrain vehicle (UTV), brush truck, and light tower are designed into the space needs. One half of a double loaded apparatus bay remains unfilled in this design. Growth beyond this allotment of apparatus and equipment would be housed in a separate location (sub-station) in an area of the community that has demonstrated the need.

As you may see we have placed a lot of thought into the design as we are building for the future and health and safety of our firefighters and citizens of Barnwell.

Respectfully,

Thomas Dicks





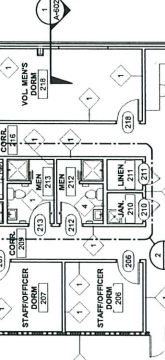
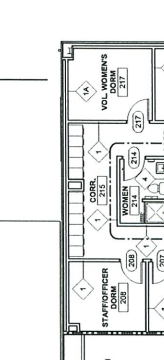
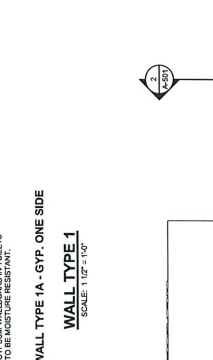
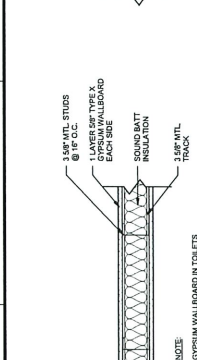
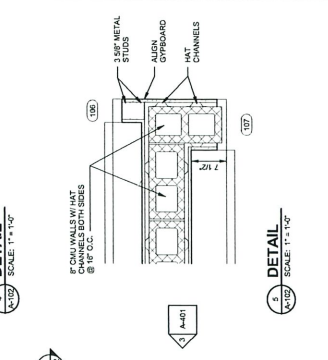
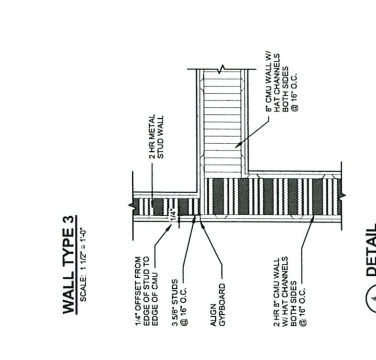
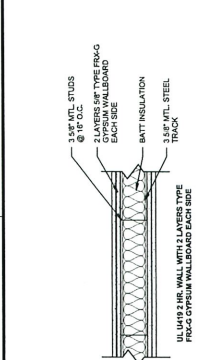
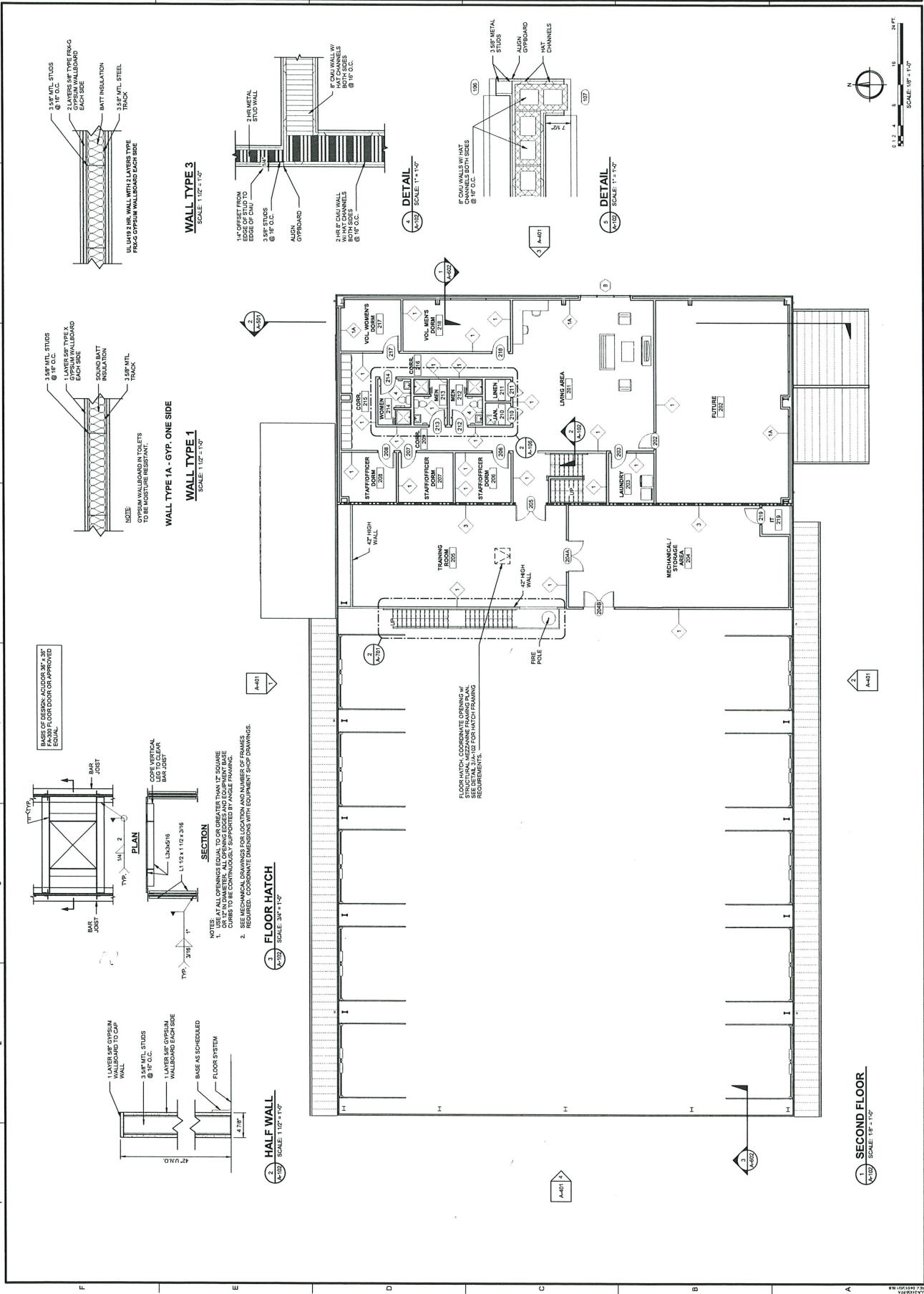


**JOHNSON, LASCHORER & ASSOCIATES, P.C.**  
 ARCHITECTS - INTERIORS - LANDSCAPE ARCHITECTS  
 1100 MARKET STREET, SUITE 1000  
 PHILADELPHIA, PA 19102  
 TEL: (215) 762-1000 FAX: (215) 762-1001  
 WWW.JLA-ARCHITECTS.COM

CLIENT:	BARNWELL FIRE STATION
CLIENT ADDRESS:	
PROJECT NAME:	BARNWELL FIRE STATION
PROJECT LOCATION:	

REV	DATE	BY	CHKD	DESCRIPTION
A	12/16/22	WLD		OWNER REVIEW
PROJECT NO: 2105-2203				
DESIGNED BY: WLD				
DATE: 11/14/2022				

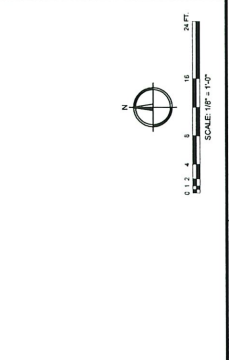
PROJECT NO:	2105-2203
DESIGNED BY:	WLD
DATE:	11/14/2022
SHEET TITLE:	FLOOR PLAN - SECOND FLOOR
DRAWING NO.:	A-102
SCALE:	AS NOTED



**NOTES:**

- ALL WALL FINISHES SHALL BE 1/2" THICK TYPE X GYPSUM WALLBOARD ON EACH SIDE AND EQUIPMENT BASE CURBS TO BE CONTINUOUSLY SUPPORTED BY ANGLE FRAMING.
- SEE MECHANICAL DRAWINGS FOR LOCATION AND DIMENSIONS OF EQUIPMENT BASE FINISHES.

**FLOOR HATCH - COORDINATE OPENING w/ MECHANICAL DRAWINGS. SEE DETAIL 4 FOR HATCH FRAMING REQUIREMENTS.**



**SECOND FLOOR**  
 SCALE: 1/8" = 1'-0"